

## Lowest Humidity Series 1%-3%RH(Automatic)

1%-3%RH series are equipped with super powerful dry unit to reliably maintain humidity to be <3%RH, which meets IPC/JEDEC J-STD-033C standard, the optimal choice for Integrated Circuits, PCB boards, Optical Fiber, Medicine and the like.

Open door 30s and closed, the humidity can reach <3%RH within 30 min!



TDU320BDF

TDU435BDF

TDU540BDF

TDU718BDF

TDU870BDF

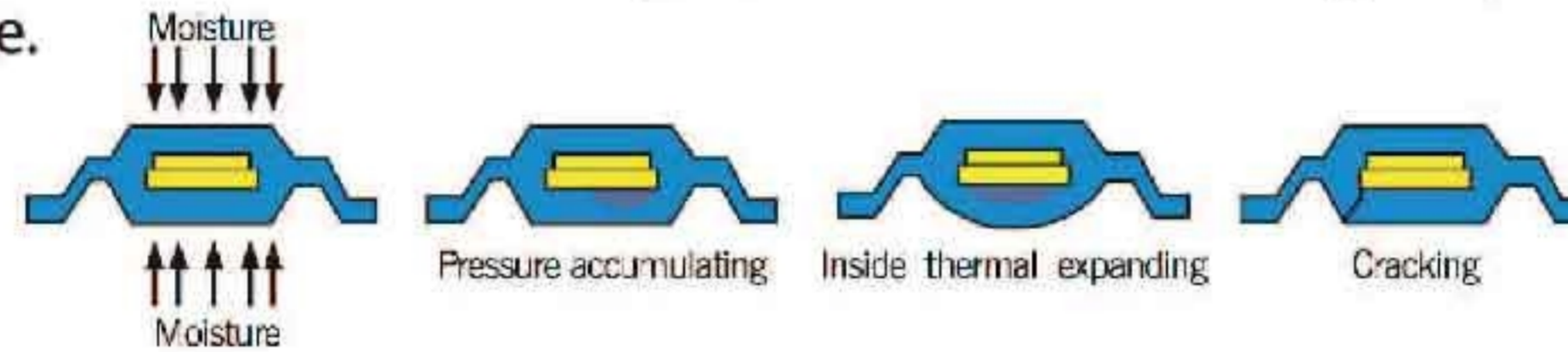
TDU1436BDF-4

TDU1436BDF 6

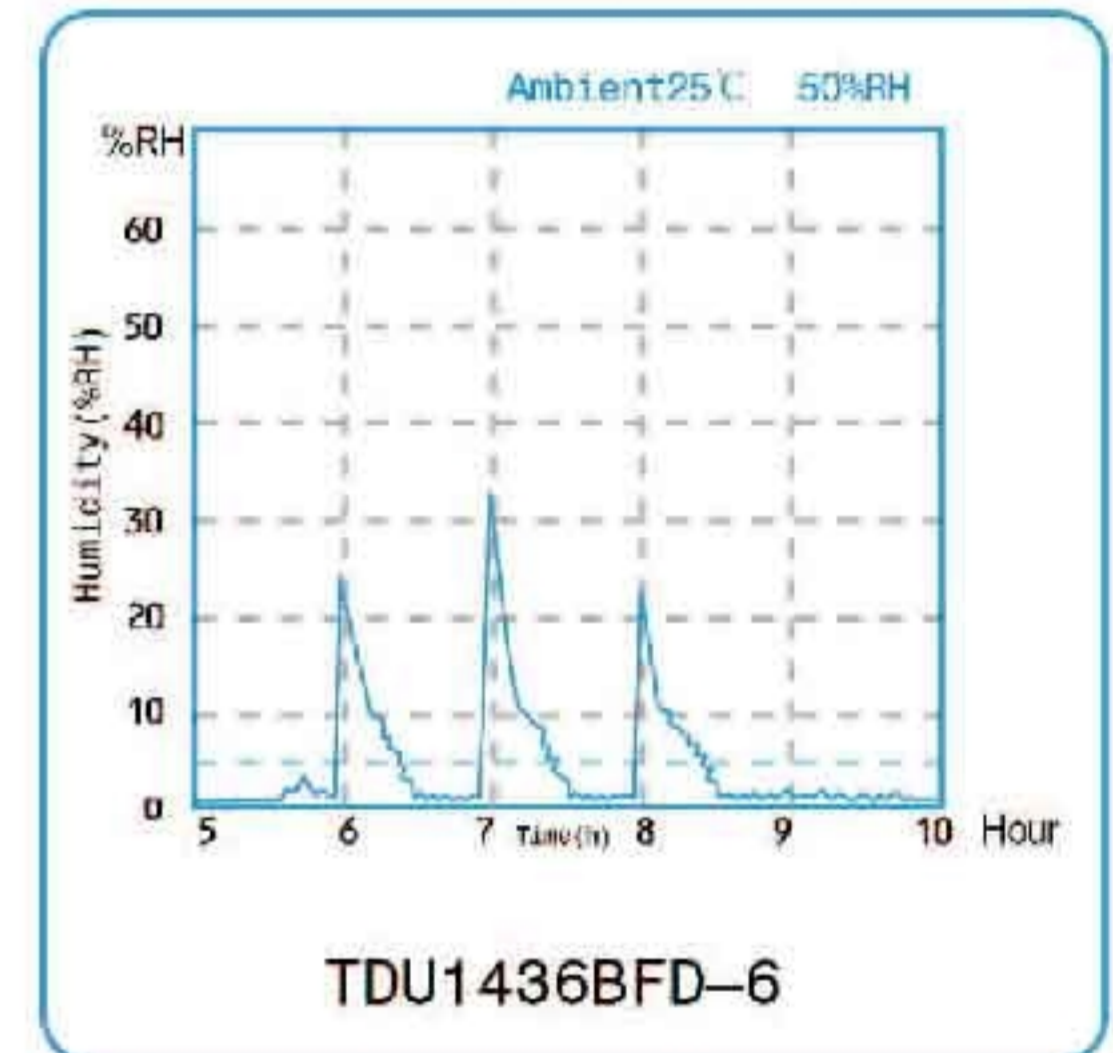
### Features:

- Equipped with super powerful dry unit
- Reinforced steel body with ESD paint(Black color)
- US imported Honeywell humidity sensor
- With 1M Ω earth terminal

In SMT manufacturing process, moisture is absolutely a killer for PCB/IC, during the heating process, the PCB/IC is likely to crack and thus cause non-effective welding because of the humidity, these MSD will be damaged by moisture immersion during production line and also inappropriate storage.



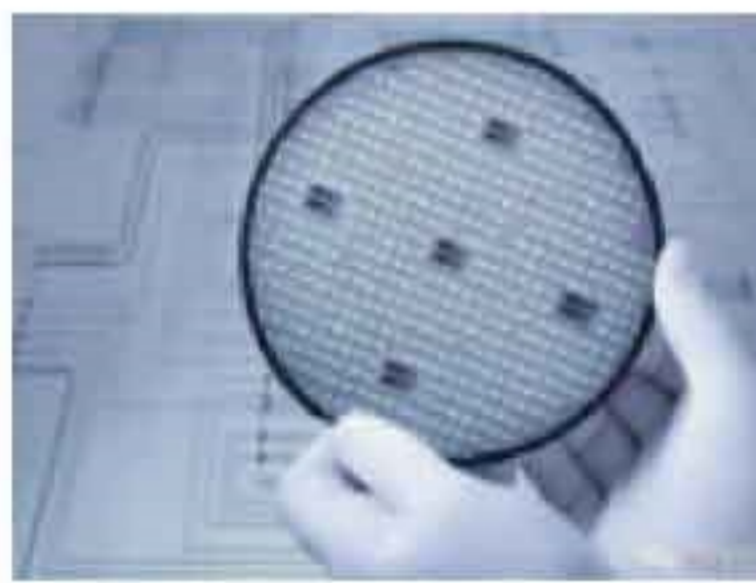
<Open door 30s and closed>



### Application:



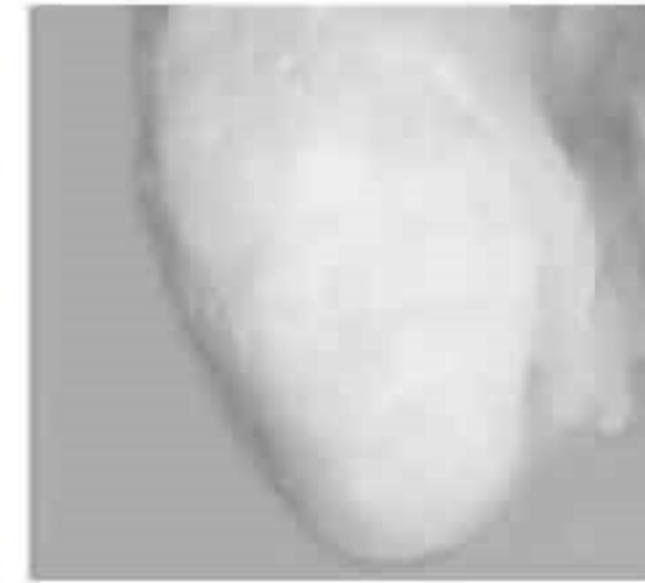
IC Package



Silicon Wafer



PCB Board



Ceramics

### Specification

Model ESD safe	Capacity	Internal Size (W×D×H,mm)	External Size (W×D×H,mm)	Shelves	GW (KG)	Average Power(W)	Max. Loading /Shelf(KG)
TDU320BDF	320L	898*422*848	900*450*1010	3	70	40	80
TDU435BDF	435L	898*572*848	900*600*1010	3	82	40	80
TDU540BDF	540L	596*682*1298	598*710*1465	3	95	60	80
TDU718BDF	718L	596*682*1723	598*710*1910	5	105	60	80
TDU870BDF	870L	898*572*1698	900*600*1890	5	130	80	100
TDU1436BDF-4	1436L	1198*682*1723	1200*710*1910	5	189	120	100
TDU1436BDF-6	1436L	1198*682*1723	1200*710*1910	5	189	120	100

Remark:1.The whole cabinet is made by reinforced steel 2.White color is without ESD function.

Options:\*Data logger with RS232 port \*Door open alarm \*Over humidity alarm